

Vascular and Cardiothoracic Surgery Solutions

GETINGE GROUP



Over 50 Years of Technical and Clinical Experience
in Vascular Graft Technology

Vascular and Cardiothoracic Surgery Solutions

Table of Contents

Knitted Vascular Grafts	Page #	Knitted Patches	Page #
HEMASHIELD Gold Knitted	6	HEMAGARD Patch Knitted	24
HEMAGARD Knitted	8	HEMAGARD Carotid Patch Knitted	25
HEMAGARD Knitted Ultrathin	10	HEMAGARD Carotid Patch Knitted Ultrathin	26
		HEMASHIELD Platinum Finesse Ultrathin Knitted Cardiovascular Patch	27
Woven Vascular Grafts	Page #	HEMASHIELD Knitted Double Velour Fabric	28
HEMASHIELD PLATINUM Woven Double Velour	11	Woven Patches	Page #
HEMASHIELD PLATINUM Woven Aortic Branch	12	HEMASHIELD Double Velour Fabric	29
CARDIOROOT	13	HEMAPATCH Woven	30
INTERGARD Woven	14	Tunneling Solutions	Page #
INTERGARD Woven Aortic Branch	15	Tunneler	31
Heparin Coated Vascular Grafts	Page #	Vein Graft Tunneling System (VGTS)	32
FUSION BIOLINE	16	Other Products	Page #
ePTFE Grafts	Page #	Polyester Tape	33
FLIXENE	17	Graft Sizers	34
Advanta SST	19		
Advanta VXT	20		
Exxcel Soft	22		

HEMAGARD Patches



CARDIOROOT



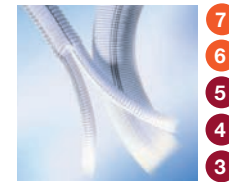
HEMASHIELD PLATINUM Woven



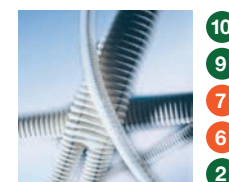
HEMASHIELD GOLD Knitted



INTERGARD Woven



HEMAGARD Knitted



HEMAGARD Knitted Ultrathin



HEMASHIELD Double Velour Fabric



EXXCEL SOFT



FLIXENE



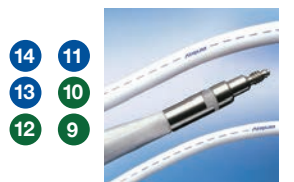
FUSION BIOLINE



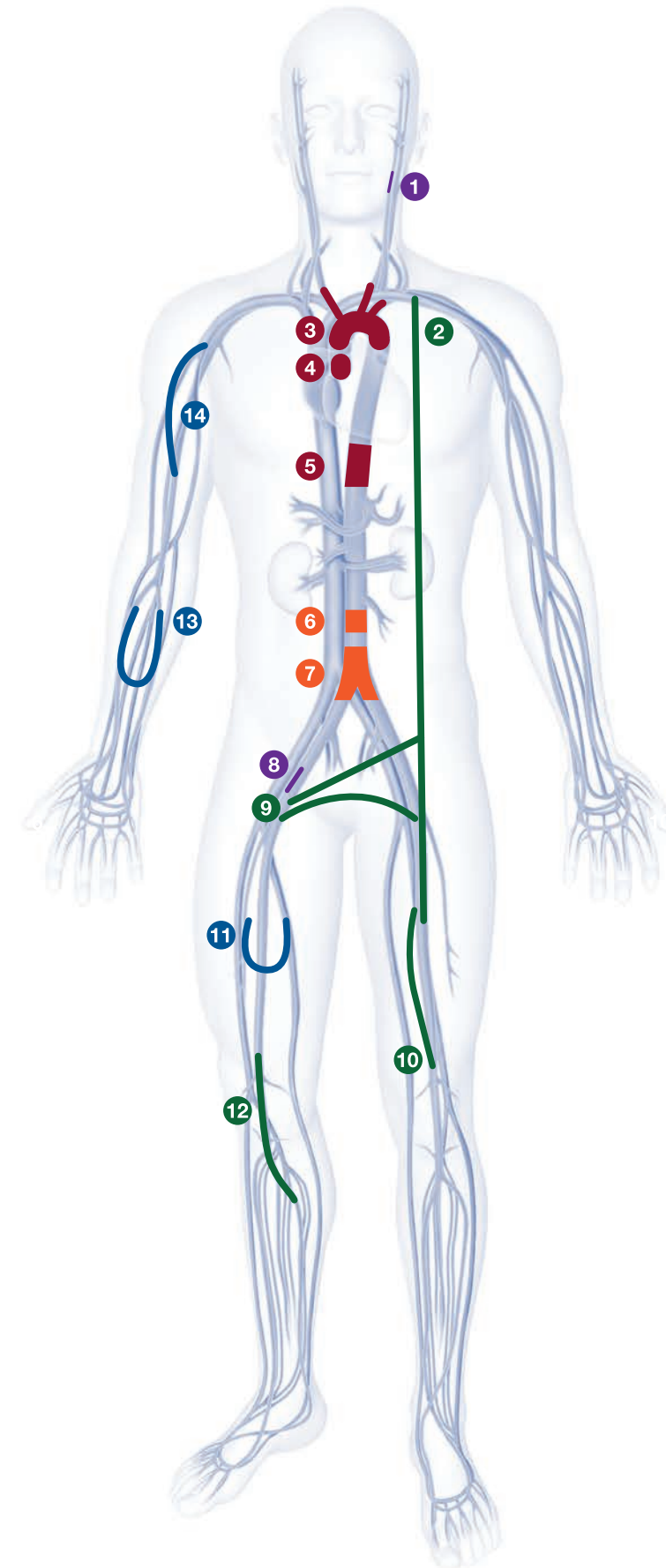
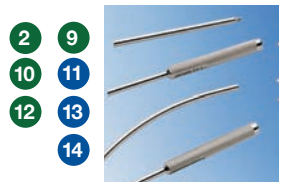
Advanta SST



Advanta VXT



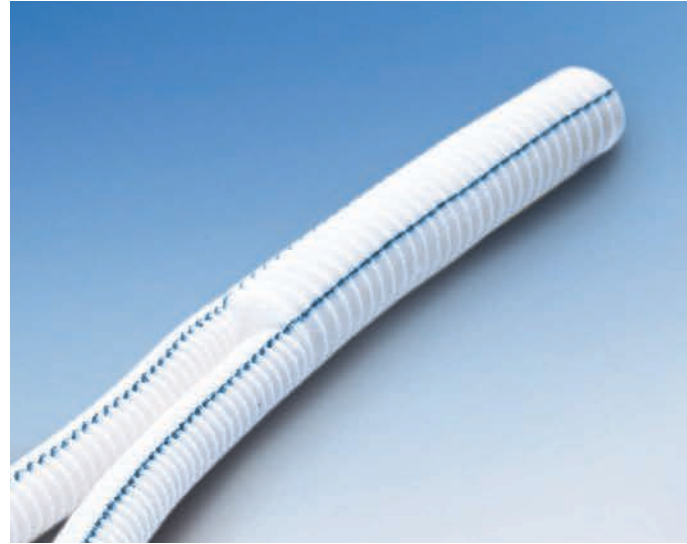
Tunneler



Refer to Instructions For Use for current indications, warnings, contraindications, and precautions.

Knitted Vascular Grafts

HEMASHIELD GOLD Knitted Double Velour



Material:

- Knitted double velour impregnated polyester graft water permeability <10 ml/min/cm²

Healing: Specially formulated for excellent healing*.

- Excellent tissue incorporation
- Thin, adherent inner capsule
- Excellent sealant resorption rate

Handling: Exceptional handling characteristics for improved efficiency*.

- Soft and easy anastomosis*
- Conforms more readily to host vessel
- Improved, consistent haemostatic control

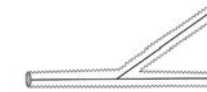
Hemostasis: Sealed by design.

- Collagen, a natural healing interface
- Proprietary impregnation, for an optimal healing* response
- No pre-clotting required, minimizing suture-hole bleeding

History: Innovation through expertise.

- Providing “The Gold Standard” in vascular grafts
- Backed by over 50 years of technical and clinical experience
- Over 2 million HEMASHIELD grafts implanted throughout the world*

Axillo-bifemoral Grafts



Diameter (mm)	Code Number
100 cm in length with 60 cm side branch:	
8 mm right branch	M002020955880
8 mm left branch	M002020955890
10 mm right branch	M002020955000
10 mm left branch	M002020955010

Straight Tubes



Diameter (mm)	Code Number
over 15 cm usable length:	
6 mm	M002020951060
7 mm	M002020951070
8 mm	M002020951080
10 mm	M002020951100
12 mm	M002020951120
14 mm	M002020951140
16 mm	M002020951160
18 mm	M002020951180
20 mm	M002020951200
22 mm	M002020951220
24 mm	M002020951240

Diameter (mm)	Code Number
over 30 cm usable length:	
6 mm	M002020954060
7 mm	M002020954070
8 mm	M002020954080
10 mm	M002020954100
12 mm	M002020954120
14 mm	M002020952140
16 mm	M002020952160
18 mm	M002020952180
20 mm	M002020952200
22 mm	M002020952220
24 mm	M002020952240

Diameter (mm)	Code Number
over 40 cm usable length:	
6 mm	M002020953060
7 mm	M002020953070
8 mm	M002020953080

Diameter (mm)	Code Number
over 60 cm usable length:	
6 mm	M002020952060
7 mm	M002020952070
8 mm	M002020952080
10 mm	M002020952100
12 mm	M002020952120

Diameter (mm)	Code Number
over 100 cm usable length:	
6 mm	M002020955060
7 mm	M002020955070
8 mm	M002020955080
10 mm	M002020955100

Bifurcations



Diameter (mm)	Code Number
over 40 cm usable length:	
12 mm x 6 mm	M002020851260
12 mm x 7 mm	M002020851270
14 mm x 7 mm	M002020851470
14 mm x 8 mm	M002020851480
16 mm x 8 mm	M002020851680
16 mm x 9 mm	M002020851690
18 mm x 9 mm	M002020851890
18 mm x 10 mm	M002020851800
20 mm x 10 mm	M002020852010
20 mm x 11 mm	M002020852110
22 mm x 11 mm	M002020852210
24 mm x 12 mm	M002020852410

*Data on file.

Knitted Vascular Grafts

HEMAGARD Knitted

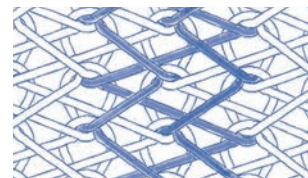


Material:

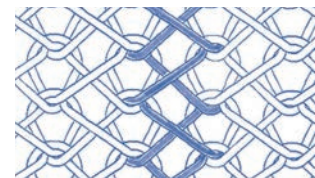
- Collagen-coated polyester graft
- Reverse locknit knitting technique
- Water permeability: < 5ml/cm²/min*

HEMAGARD Knitted properties:

- Proprietary textile design: reverse locknit knitting technique produces burst strength, radial tensile strength and suture pull-out strength characteristics which are significantly greater than corresponding material, which utilize a tricot knit*
- HEMAGARD locknit construction designed to have a long term stability and resistance to post-operative dilatation



Reverse Locknit



Tricot Knit

Straight



Diameter (mm)	Length (cm)	Code Number
6 mm	20 cm	HGK0006-20
7 mm	20 cm	HGK0007-20
8 mm	20 cm	HGK0008-20
10 mm	20 cm	HGK0010-20
12 mm	20 cm	HGK0012-20
14 mm	20 cm	HGK0014-20
16 mm	20 cm	HGK0016-20
18 mm	20 cm	HGK0018-20
20 mm	20 cm	HGK0020-20
22 mm	20 cm	HGK0022-20
24 mm	20 cm	HGK0024-20

Diameter (mm)	Length (cm)	Code Number
6 mm	40 cm	HGK0006-40
7 mm	40 cm	HGK0007-40
8 mm	40 cm	HGK0008-40
10 mm	40 cm	HGK0010-40
12 mm	40 cm	HGK0012-40
14 mm	40 cm	HGK0014-40
16 mm	40 cm	HGK0016-40
18 mm	40 cm	HGK0018-40
20 mm	40 cm	HGK0020-40
22 mm	40 cm	HGK0022-40
24 mm	40 cm	HGK0024-40

Diameter (mm)	Length (cm)	Code Number
12 mm	60 cm	HGK0012-60
6 mm	70 cm	HGK0006-70
7 mm	70 cm	HGK0007-70
8 mm	70 cm	HGK0008-70
10 mm	70 cm	HGK0010-70
6 mm	100 cm	HGK0006-100
7 mm	100 cm	HGK0007-100
8 mm	100 cm	HGK0008-100
10 mm	100 cm	HGK0010-100

Radially Supported



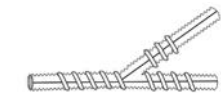
Diameter (mm)	Proximal/ Distal Length (cm)	Supported Length (cm)	Total Length (cm)	Code Number
8 mm	40/15 cm	15 cm	70 cm	HGK0008RS15
6 mm	35/15 cm	20 cm	70 cm	HGK0006RS20
8 mm	35/15 cm	20 cm	70 cm	HGK0008RS20
6 mm	25/15 cm	30 cm	70 cm	HGK0006RS30
8 mm	25/15 cm	30 cm	70 cm	HGK0008RS30
8 mm	20/20 cm	45 cm	85 cm	HGK0008RS45

Bifurcated



Diameter (mm)	Length (cm)	Code Number
12 mm x 6 mm	50 cm	HGK1206
12 mm x 7 mm	50 cm	HGK1207
14 mm x 7 mm	50 cm	HGK1407
14 mm x 8 mm	50 cm	HGK1408
16 mm x 8 mm	50 cm	HGK1608
16 mm x 9 mm	50 cm	HGK1609
18 mm x 9 mm	50 cm	HGK1809
18 mm x 10 mm	50 cm	HGK1810
20 mm x 10 mm	50 cm	HGK2010
20 mm x 11 mm	50 cm	HGK2011
22 mm x 11 mm	50 cm	HGK2211
24 mm x 12 mm	50 cm	HGK2412

Axillo-Bifemoral



Diameter (mm)	Distal Length body/branch (cm)	Supported Length body/branch (cm)	Total Length body/branch (cm)	Code Number
8 x 8 mm			100/60 cm	HGKAX0808
10 x 10 mm			100/60 cm	HGKAX1010
8 x 8 mm	20/35 cm	45/20 cm	85/55 cm	HGKAX0808RS45/20
8 x 8 mm	20/25 cm	45/30 cm	85/55 cm	HGKAX0808RS45/30
8 x 8 mm	20/25 cm	60/30 cm	100/55 cm	HGKAX0808RS60/30
10 x 8 x 8 mm	25/35 cm	35/20 cm	85/55 cm	HGKAX100808RS35/20
8 x 6 x 6 mm	25/35 cm	35/20 cm	85/55 cm	HGKAX080606RS35/20

*Data on file.

Knitted Vascular Grafts

HEMAGARD Knitted Ultrathin



Material:

- Collagen-coated polyester graft
- Reverse locknit knitting technique
- Water permeability: < 5ml/cm²/min*

HEMAGARD Knitted Ultrathin properties:

- Proprietary ultrathin wall technology designed to improve compliance in peripheral applications
- Available in radially supported configuration for kink and compression resistance, including axillo-bifemoral and fem-fem crossover procedures.

Ultrathin Straight



Diameter (mm)	Length (cm)	Code Number
6 mm	20 cm	HGKUT0006-20
7 mm	20 cm	HGKUT0007-20
8 mm	20 cm	HGKUT0008-20
6 mm	40 cm	HGKUT0006-40
7 mm	40 cm	HGKUT0007-40
8 mm	40 cm	HGKUT0008-40
6 mm	70 cm	HGKUT0006-70
7 mm	70 cm	HGKUT0007-70
8 mm	70 cm	HGKUT0008-70

Ultrathin Radially Supported Straight



Diameter (mm)	Proximal / Distal Length (cm)	Supported Length (cm)	Total Length (cm)	Code Number
8 mm	40/15 cm	15 cm	70 cm	HGKUT0008RS15
6 mm	35/15 cm	20 cm	70 cm	HGKUT0006RS20
7 mm	35/15 cm	20 cm	70 cm	HGKUT0007RS20
8 mm	35/15 cm	20 cm	70 cm	HGKUT0008RS20
6 mm	25/15 cm	30 cm	70 cm	HGKUT0006RS30
7 mm	25/15 cm	30 cm	70 cm	HGKUT0007RS30
8 mm	25/15 cm	30 cm	70 cm	HGKUT0008RS30

*Data on file.

Woven Vascular Grafts

HEMASHIELD PLATINUM Woven Double Velour



Material:

- Woven double velour collagen impregnated polyester graft
- Water permeability: < 5 ml/cm²/min*

Straight



Diameter (mm)	Code Number
Over 15 cm usable length:	
12 mm	M00202175112P0
14 mm	M00202175114P0
16 mm	M00202175116P0
18 mm	M00202175118P0
20 mm	M00202175120P0
22 mm	M00202175122P0
24 mm	M00202175124P0
26 mm	M00202175126P0
28 mm	M00202175128P0
30 mm	M00202175130P0
32 mm	M00202175132P0
34 mm	M00202175134P0
38 mm	M00202175138P0

Diameter (mm)	Code Number
Over 30 cm usable length:	
6 mm	M00202175206P0
7 mm	M00202175207P0
8 mm	M00202175208P0
10 mm	M00202175210P0
12 mm	M00202175412P0
14 mm	M00202175414P0
16 mm	M00202175416P0
18 mm	M00202175418P0
20 mm	M00202175420P0
22 mm	M00202175422P0
24 mm	M00202175424P0
26 mm	M00202175426P0
28 mm	M00202175428P0
30 mm	M00202175430P0
32 mm	M00202175432P0
34 mm	M00202175434P0
38 mm	M00202175438P0

Diameter (mm)	Code Number
Over 60 cm usable length:	
6 mm	M00202175406P0
7 mm	M00202175407P0
8 mm	M00202175408P0
10 mm	M00202175410P0
20 mm	M00202175620P0
22 mm	M00202175622P0
24 mm	M00202175624P0
26 mm	M00202175626P0
28 mm	M00202175628P0
30 mm	M00202175630P0
32 mm	M00202175632P0
34 mm	M00202175634P0
38 mm	M00202175638P0

Bifurcated



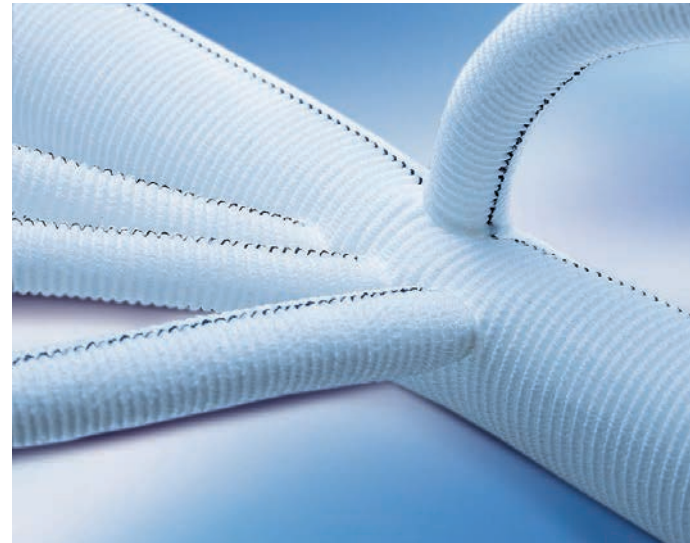
Diameter (mm)	Code Number
Over 40 cm usable length:	
12 mm x 6 mm	M00202166126P0
14 mm x 7 mm	M00202166147P0
14 mm x 8 mm	M00202166148P0
16 mm x 8 mm	M00202166168P0
16 mm x 9 mm	M00202166169P0
18 mm x 9 mm	M00202166189P0

Diameter (mm)	Code Number
18 mm x 10 mm	M00202166180P0
20 mm x 10 mm	M00202166201P0
20 mm x 11 mm	M00202166211P0
22 mm x 11 mm	M00202166221P0
24 mm x 12 mm	M00202166241P0

*Data on file.

Woven Vascular Grafts

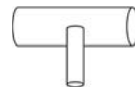
HEMASHIELD PLATINUM Woven Aortic Branch



Material:

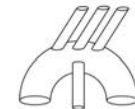
- Woven double velour collagen impregnated polyester graft
- Water permeability: < 5ml/cm²/min*

Aortic Arch Single Branch



Thoracic Size (cm)	Branch Size (mm)	Code Number
50 cm usable length:		
20 cm x 50 cm	10 mm	M00202175820P0
22 cm x 50 cm	10 mm	M00202175822P0
24 cm x 50 cm	10 mm	M00202175824P0
26 cm x 50 cm	10 mm	M00202175826P0
28 cm x 50 cm	10 mm	M00202175828P0
30 cm x 50 cm	10 mm	M00202175830P0
32 cm x 50 cm	10 mm	M00202175832P0
34 cm x 50 cm	10 mm	M00202175834P0

Angled Four Branch



Thoracic Size (cm)	Branch Size (mm)	Code Number
50 cm usable length:		
24 cm x 50 cm	12, 10, 8, 8 mm	M00202175724AP0
26 cm x 50 cm	12, 10, 8, 8 mm	M00202175726AP0
28 cm x 50 cm	12, 10, 8, 8 mm	M00202175728AP0
30 cm x 50 cm	12, 10, 8, 8 mm	M00202175730AP0

*Data on file.

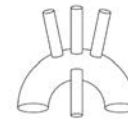
**Made on request only

3 Branch Graft



Thoracic Size (cm)	Branch Size (mm)	Code Number
30 cm usable length:		
12 cm x 30 cm	8 mm	M00202175912P0
14 cm x 30 cm	10 mm	M00202175914P0

Aortic Arch 4 Branch



Thoracic Size (cm)	Branch Size (mm)	Code Number
50 cm usable length:		
20 cm x 50 cm	10, 10, 8, 8 mm	M00202175920P0
22 cm x 50 cm	10, 10, 8, 8 mm	M00202175922P0
24 cm x 50 cm	10, 10, 8, 8 mm	M00202175924P0
26 cm x 50 cm	10, 10, 8, 8 mm	M00202175926P0
28 cm x 50 cm	10, 10, 8, 8 mm	M00202175928P0
30 cm x 50 cm	10, 10, 8, 8 mm	M00202175930P0
32 cm x 50 cm	12, 10, 10, 10 mm	M00202175732P0
34 cm x 50 cm	12, 10, 10, 10 mm	M00202175734P0

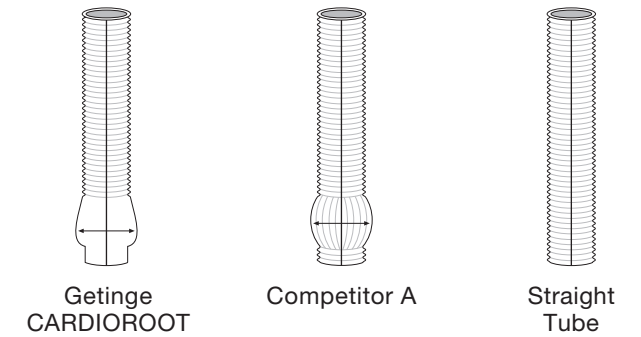
Thoraco Abdominal Aortic Graft



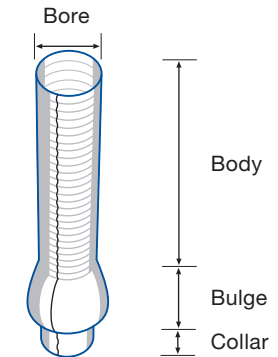
Thoracic Size (cm)	Branch Size (mm)	Code Number
47 cm usable length:		
26 cm x 47 cm	10, 10, 8, 8 mm	**M00202175426T0
28 cm x 47 cm	10, 10, 8, 8 mm	**M00202175428T0
30 cm x 47 cm	10, 10, 8, 8 mm	**M00202175430T0
32 cm x 47 cm	10, 10, 8, 8 mm	**M00202175432T0

Woven Vascular Grafts

CARDIOROOT Aortic Graft



The proximal collar can be used for prosthetic valve sewing or trimmed/inverted for valve sparing procedures.



One piece-design collagen-coated CARDIOROOT graft delivers a new option for the repair or reconstruction of the ascending aorta. The design of CARDIOROOT mimics the anatomy and blood flow dynamics of the natural sinuses of Valsalva.

- Anatomically correct shape
- Unique uncrimped section that does not stretch:
 - allows for easy sewing of valve remnants, or prosthetic valve within the tube and shortening the procedure
 - facilitates estimation of the length required for placement of valve remnants or prosthetic valve
 - can be precisely trimmed and shaped in case of remodeling technique procedures
 - three reference lines acting as a guide for prosthetic valve or valve remnants anastomosis

CARDIOROOT

Body Diameter (mm)	Body Length (cm)	Bulge Diameter (mm)	Bulge Length (mm)	Collar Length (mm)	Code Number
24 mm	15 cm	32 mm	24 mm	10 mm	HEWROOT0024
26 mm	15 cm	34 mm	26 mm	10 mm	HEWROOT0026
28 mm	15 cm	36 mm	28 mm	10 mm	HEWROOT0028
30 mm	15 cm	38 mm	30 mm	10 mm	HEWROOT0030
32 mm	15 cm	40 mm	32 mm	10 mm	HEWROOT0032
34 mm	15 cm	42 mm	34 mm	10 mm	HEWROOT0034

Woven Vascular Grafts INTERGARD Woven



Material:

- Collagen-coated external-velour polyester graft
- Water permeability: < 5ml/cm²/min*

Straight

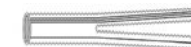
Diameter (mm)	Length (cm)	Code Number
12 mm	15 cm	IGW0012-15
14 mm	15 cm	IGW0014-15
16 mm	15 cm	IGW0016-15
18 mm	15 cm	IGW0018-15
20 mm	15 cm	IGW0020-15
22 mm	15 cm	IGW0022-15
24 mm	15 cm	**IGW0024-15
26 mm	15 cm	**IGW0026-15
28 mm	15 cm	**IGW0028-15
30 mm	15 cm	**IGW0030-15
32 mm	15 cm	**IGW0032-15
34 mm	15 cm	**IGW0034-15
36 mm	15 cm	IGW0036-15

Diameter (mm)	Length (cm)	Code Number
6 mm	30 cm	IGW0006-30
8 mm	30 cm	IGW0008-30
10 mm	30 cm	IGW0010-30
12 mm	30 cm	IGW0012-30
14 mm	30 cm	IGW0014-30
16 mm	30 cm	IGW0016-30
18 mm	30 cm	IGW0018-30
20 mm	30 cm	IGW0020-30
22 mm	30 cm	IGW0022-30
24 mm	30 cm	IGW0024-30
26 mm	30 cm	IGW0026-30
28 mm	30 cm	IGW0028-30
30 mm	30 cm	IGW0030-30
32 mm	30 cm	IGW0032-30
34 mm	30 cm	IGW0034-30
36 mm	30 cm	IGW0036-30
38 mm	30 cm	IGW0038-30



Bifurcated

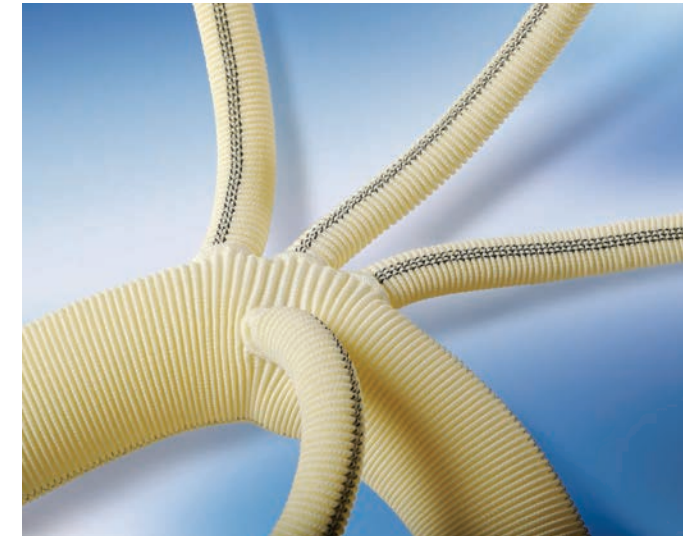
Diameter (mm)	Length (cm)	Code Number
12 x 6 mm	50 cm	IGW1206
14 x 7 mm	50 cm	IGW1407
16 x 8 mm	50 cm	IGW1608
18 x 9 mm	50 cm	IGW1809
20 x 10 mm	50 cm	IGW2010
22 x 11 mm	50 cm	IGW2211
24 x 12 mm	50 cm	IGW2412



*Data on file.

**Made on request only.

Woven Vascular Grafts INTERGARD Woven Aortic Branch



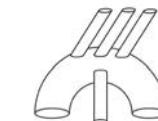
Material:

- Collagen-coated external-velour polyester graft
- Water permeability: < 5ml/cm²/min*

INTERGARD Woven Aortic Arch properties:

- Pre-sewn branches designed for total replacement of all diseased segments, and to allow reduced cardiac ischemic time
- Anatomically correct angle of branches is designed for easy suturing to the host vessels and to prevent graft kinking
- 30 cm length perfusion branch designed to be positioned outside of the operative field for improved control and visualization

Aortic Arch



Diameter (mm)	Length (cm)	Code Number
20 x 10 x 8 x 8 x 10 mm	50 x 30 x 30 x 30 x 3 cm	HEWAA2010080810/1
22 x 10 x 8 x 8 x 10 mm	50 x 30 x 30 x 30 x 30 cm	HEWAA2210080810/1
24 x 10 x 8 x 8 x 10 mm	50 x 30 x 30 x 30 x 30 cm	HEWAA2410080810/1
26 x 10 x 8 x 8 x 10 mm	50 x 30 x 30 x 30 x 30 cm	HEWAA2610080810/1
28 x 10 x 8 x 8 x 10 mm	50 x 30 x 30 x 30 x 30 cm	HEWAA2810080810/1
30 x 10 x 8 x 8 x 10 mm	50 x 30 x 30 x 30 x 30 cm	HEWAA3010080810/1
32 x 10 x 8 x 8 x 10 mm	50 x 30 x 30 x 30 x 30 cm	HEWAA3210080810/1
34 x 10 x 8 x 8 x 10 mm	50 x 30 x 30 x 30 x 30 cm	HEWAA3410080810/1

*Data on file.



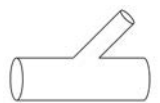
Material:

- Collagen-coated external-velour polyester graft
- Water permeability: < 5ml/cm²/min*

INTERGARD HEMABRIDGE properties:

- Designed to allow an easier and less time consuming technique
- Pre-sewn perfusion branch allow for antegrade arterial perfusion, and can be used to replace the brachiocephalic artery in a partial arch replacement

Hemabridge



Diameter (mm)	Length (cm)	Code Number
20 mm x 10 mm	35 cm x 40 cm	HEW2010BRIDGE
22 mm x 10 mm	35 cm x 40 cm	HEW2210BRIDGE
24 mm x 10 mm	35 cm x 40 cm	HEW2410BRIDGE
26 mm x 10 mm	35 cm x 40 cm	HEW2610BRIDGE
28 mm x 10 mm	35 cm x 40 cm	HEW2810BRIDGE
30 mm x 10 mm	35 cm x 40 cm	HEW3010BRIDGE
32 mm x 10 mm	35 cm x 40 cm	HEW3210BRIDGE
34 mm x 10 mm	35 cm x 40 cm	HEW3410BRIDGE
36 mm x 10 mm	35 cm x 40 cm	HEW3610BRIDGE

Heparin Vascular Grafts FUSION BIOLINE



Dual-layer construction: ePTFE and PET layers
FUSION BIOLINE Vascular Graft is constructed of two layers. The inner layer is comprised of ePTFE. The BIOLINE heparin coating is bonded to this inner layer with albumin, the main blood protein. The outer layer is a knit polyester textile. These two layers are fused together with a proprietary polycarbonate-urethane.

By adding the benefits of heparin to the unique FUSION dual-layer construction, the FUSION BIOLINE Graft sets a new standard for peripheral bypass treatment.

Straight



Diameter (mm)	Length (cm)	Code Number
5 mm	40 cm	M00201501045B0
5 mm	80 cm	M00201501085B0
6 mm	20 cm	M00201501026B0
6 mm	40 cm	M00201501046B0
6 mm	60 cm	M00201501066B0
6 mm	80 cm	M00201501086B0
7 mm	40 cm	M00201501047B0
7 mm	80 cm	M00201501087B0
8 mm	40 cm	M00201501048B0
8 mm	60 cm	M00201501068B0
8 mm	80 cm	M00201501088B0
10 mm	40 cm	M00201501041B0
10 mm	80 cm	M00201501081B0

Helix Supported



Diameter (mm)	Length (cm)	Code Number
5 mm	40 cm	M00201503045B0
5 mm	80 cm	M00201503085B0
6 mm	40 cm	M00201503046B0
6 mm	60 cm	M00201503066B0
6 mm	80 cm	M00201503086B0
7 mm	40 cm	M00201503047B0
7 mm	80 cm	M00201503087B0
8 mm	40 cm	M00201503048B0
8 mm	60 cm	M00201503068B0
8 mm	80 cm	M00201503088B0
10 mm	40 cm	M00201503041B0
10 mm	80 cm	M00201503081B0

All grafts are fully supported except 3 cm on one end.

ePTFE Vascular Grafts FLIXENE



FLIXENE provides a durable vascular access option

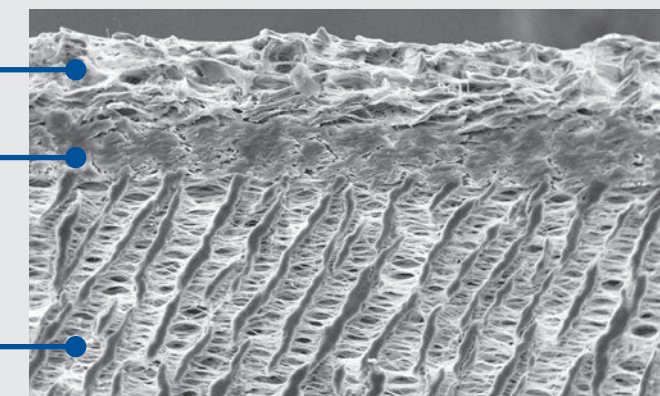
- **Durable construction**
Engineered to meet clinical demands
- **Strength and durability**
FLIXENE exhibits high radial tensile strength even after simulated needle cannulations¹
- **Improved suture retention**
FLIXENE offers greater suture retention over Getinge's single-layer ePTFE grafts¹
- **Published data**
Successful early cannulation (24-72 hours) in select patient series²

3 Layer ePTFE Graft

Large pore surface layer, more receptive to tissue ingrowth

Middle layer, reinforcing wrap for added durability

Small pore base layer, inner graft surface porosity of nominal 20 µm

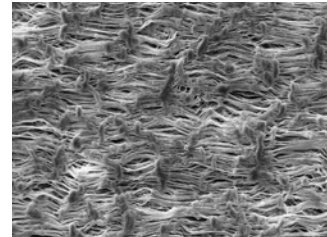


1. Data on file.

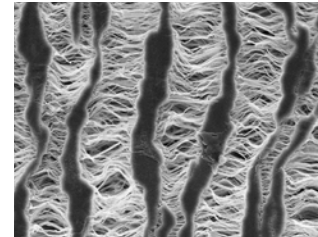
2. Schild AF, Schuman ES, Noicely K, et al. Early cannulation prosthetic graft (FLIXENE) for arteriovenous access. J Vasc Access. 2011 Jul-Sep;12(3):248-52.

ePTFE Vascular Grafts

ADVANTA VXT



VXT has a large pore surface

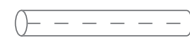


VXT has an inner surface porosity of nominal 20 µm

2-layer reinforced grafts

Experience Getinge's VXT graft technology in your next surgical graft placement. The 2-layer construction makes VXT a strong and durable vascular graft.

Straight



Diameter (mm)	Length (cm)	Wall Thickness	Helix/ Ring Support	Slider GDS	Code Number
4 mm	10 cm	SW	No	No	21276
4 mm	50 cm	SW	No	No	21015
4 mm	70 cm	SW	No	No	21024
5 mm	10 cm	SW	No	No	21277
5 mm	40 cm	SW	No	Yes	22011
5 mm	50 cm	SW	No	Yes	22016
5 mm	70 cm	SW	No	Yes	22025
6 mm	10 cm	SW	No	No	21000
6 mm	10 cm	TW	No	No	21154
6 mm	30 cm	SW	No	No	21007
6 mm	40 cm	SW	No	Yes	22012
6 mm	40 cm	TW	No	Yes	22169
6 mm	50 cm	SW	No	Yes	22017
6 mm	50 cm	TW	No	Yes	22175
6 mm	70 cm	SW	No	Yes	22026
6 mm	70 cm	TW	No	Yes	22185

Diameter (mm)	Length (cm)	Wall Thickness	Helix/ Ring Support	Slider GDS	Code Number
6 mm	80 cm	TW	No	Yes	22190
7 mm	10 cm	SW	No	No	21001
7 mm	50 cm	SW	No	Yes	22018
7 mm	50 cm	TW	No	Yes	22176
7 mm	70 cm	SW	No	Yes	22027
7 mm	70 cm	TW	No	Yes	22186
8 mm	10 cm	SW	No	No	21002
8 mm	40 cm	SW	No	Yes	22014
8 mm	40 cm	TW	No	Yes	22170
8 mm	50 cm	SW	No	Yes	22019
8 mm	70 cm	SW	No	Yes	22028
8 mm	70 cm	TW	No	Yes	22187
8 mm	80 cm	TW	No	Yes	22192
10 mm	50 cm	SW	No	No	21020
10 mm	70 cm	SW	No	No	21029

Externally Supported



Diameter (mm)	Length (cm)	Wall Thickness	Helix/ Ring Support	Slider GDS	Code Number
5 mm	10 cm	SW	Yes	No	21279
5 mm	40 cm	SW	Yes	Yes	22058
5 mm	50 cm	SW	Yes	Yes	22061
5 mm	80 cm	SW	Yes	No	21074
6 mm	40 cm	SW	Yes	Yes	22059
6 mm	45 cm	SW	Yes	Yes	22092
6 mm	50 cm	TW	Yes	Yes	22012
6 mm	50 cm	SW	Yes	Yes	22062
6 mm	50 cm	TW	Yes	Yes	22212
6 mm	70 cm	SW	Yes	Yes	22070
6 mm	70 cm	TW	Yes	Yes	22220
6 mm	80 cm	SW	Yes	Yes	22075
6 mm	80 cm	TW	Yes	Yes	22225
6 mm	100 cm	TW	Yes	Yes	22232
7 mm	50 cm	SW	Yes	Yes	22063
7 mm	50 cm	TW	Yes	Yes	22213
7 mm	70 cm	SW	Yes	Yes	22071
7 mm	70 cm	TW	Yes	Yes	22221
7 mm	80 cm	SW	Yes	Yes	22076
8 mm	40 cm	TW	Yes	Yes	22209
8 mm	50 cm	SW	Yes	Yes	22064
8 mm	50 cm	TW	Yes	Yes	22214
8 mm	70 cm	SW	Yes	Yes	22072
8 mm	70 cm	TW	Yes	Yes	22222
8 mm	80 cm	TW	Yes	Yes	22227
10 mm	80 cm	SW	Yes	No	21078

Trumpet



Diameter (mm)	Length (cm)	Wall Thickness	Helix/ Ring Support	Slider GDS	Code Number
6 mm	40 cm	SW	No	Yes	22280
6 mm	40 cm	SW	Yes	Yes	22279
6 mm	80 cm	TW	Yes	Yes	22286
7 mm	80 cm	TW	Yes	Yes	22287
8 mm	80 cm	TW	Yes	Yes	22288

Tapered



Diameter (mm)	Length (cm)	Wall Thickness	Helix/ Ring Support	Slider GDS	Code Number
4-6 mm	45 cm	SW	No	Yes	22114
4-7 mm	45 cm	SW	No	Yes	22115
4-7 mm	70 cm	SW	No	Yes	22117
4-7 mm	45 cm	SW	No	Yes	22297
5-8 mm	45 cm	SW	No	Yes	22116
4-6 mm	45 cm	SW	Yes	Yes	22124
4-7 mm	45 cm	SW	Yes	Yes	22125
4-7 mm	80 cm	TW	Yes	Yes	22266
5-8 mm	80 cm	TW	Yes	Yes	22267

ePTFE Vascular Grafts

EXXCEL SOFT



Diameter (mm)	Usable Length (cm)	Supported Length (cm)	Code Number
6 mm	10 cm		M002004810160
6 mm	20 cm		M002004810260
6 mm	30 cm		M002004810360
6 mm	40 cm		M002004810460
6 mm	50 cm		M002004810560
6 mm	60 cm		M002004810660
6 mm	70 cm		M002004810760
6 mm	80 cm		M002004810860
7 mm	40 cm		M002004810470
7 mm	50 cm		M002004810570
7 mm	70 cm		M002004810770
8 mm	20 cm		M002004810280
8 mm	40 cm		M002004810480
8 mm	50 cm		M002004810580
8 mm	70 cm		M002004810780
8 mm	80 cm		M002004810880

Proven Graft Technology:

- A full line of sizes and designs – including fully and centrally supported and tapered grafts in varying length options
- Enhanced softness for excellent handling
- GUIDELINE® marker assists in proper alignment

Step



Diameter (mm)	Usable Length (cm)	Supported Length (cm)	Code Number
4-6 mm	45 cm		M002004824560
4-7 mm	45 cm		M002004824570

Step Centrally Supported



Diameter (mm)	Usable Length (cm)	Supported Length (cm)	Code Number
4-7 mm	45 cm	5 cm	M002004864570

Straight



Diameter (mm)	Usable Length (cm)	Supported Length (cm)	Code Number
4 mm	20 cm		M002004810240
4 mm	40 cm		M002004810440
4 mm	70 cm		M002004810740
4 mm	80 cm		M002004810840
5 mm	40 cm		M002004810450
5 mm	50 cm		M002004810550
5 mm	70 cm		M002004810750
5 mm	80 cm		M002004810850

Straight Externally Supported



Diameter (mm)	Usable Length (cm)	Supported Length (cm)	Code Number
6 mm	50 cm	50 cm	M002004830560
6 mm	60 cm	60 cm	M002004830660
6 mm	70 cm	20 cm	M002004847260
6 mm	70 cm	30 cm	M002004847360
6 mm	70 cm	50 cm	M002004847560
6 mm	70 cm	70 cm	M002004830760
6 mm	80 cm	20 cm	M002004848260
6 mm	80 cm	30 cm	M002004848360
6 mm	80 cm	50 cm	M002004848560
6 mm	80 cm	80 cm	M002004830860
8 mm	30 cm	12 cm	M002004843180
8 mm	50 cm	50 cm	M002004830580
8 mm	70 cm	50 cm	M002004847580
8 mm	70 cm	70 cm	M002004830780
8 mm	80 cm	50 cm	M002004848580
8 mm	80 cm	80 cm	M002004830880

Straight Centrally Supported



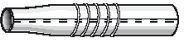
Diameter (mm)	Usable Length (cm)	Supported Length (cm)	Code Number
6 mm	40 cm	5 cm	M002004844060
6 mm	45 cm	5 cm	M002004844560
6 mm	50 cm	5 cm	M002004845060

Short Taper



Diameter (mm)	Usable Length (cm)	Supported Length (cm)	Code Number
4-6 mm	40 cm		M002004894460
4-6 mm	50 cm		M002004895460
4-7 mm	40 cm		M002004894470
4-7 mm	45 cm		M002004894570

Short Taper Centrally Supported



Diameter (mm)	Usable Length (cm)	Supported Length (cm)	Code Number
4-7 mm	40 cm	5 cm	M002004869400
4-7 mm	45 cm	15 cm	M002004869450
4-7 mm	45 cm	10 cm	M002004869470

Thin Wall Straight



Diameter (mm)	Usable Length (cm)	Supported Length (cm)	Code Number
5 mm	70 cm		M002004910750
5 mm	80 cm		M002004910850
6 mm	10 cm		M002004910160
6 mm	20 cm		M002004910260
6 mm	30 cm		M002004910360
6 mm	40 cm		M002004910460
6 mm	50 cm		M002004910560
6 mm	60 cm		M002004910660
6 mm	70 cm		M002004910760
6 mm	80 cm		M002004910860
7 mm	70 cm		M002004910770
7 mm	80 cm		M002004910870
8 mm	20 cm		M002004910280
8 mm	30 cm		M002004910380
8 mm	40 cm		M002004910480
8 mm	50 cm		M002004910580
8 mm	70 cm		M002004910780
8 mm	80 cm		M002004910880
10 mm	40 cm		M002004910410
10 mm	50 cm		M002004910510
10 mm	70 cm		M002004910710
10 mm	80 cm		M002004910810

Thin Wall Straight Externally Supported



Diameter (mm)	Usable Length (cm)	Supported Length (cm)	Code Number
5 mm	70 cm	50 cm	M002004947550
6 mm	40 cm	20 cm	M002004944260
6 mm	40 cm	30 cm	M002004944360
6 mm	40 cm	40 cm	M002004930460
6 mm	50 cm	20 cm	M002004945260
6 mm	50 cm	50 cm	M002004930560
6 mm	60 cm	60 cm	M002004930660
6 mm	70 cm	20 cm	M002004947260
6 mm	70 cm	30 cm	M002004947360
6 mm	70 cm	50 cm	M002004947560
6 mm	70 cm	60 cm	M002004947660
6 mm	70 cm	70 cm	M002004930760
6 mm	80 cm	20 cm	M002004948260
6 mm	80 cm	30 cm	M002004948360
6 mm	80 cm	50 cm	M002004948560
6 mm	80 cm	60 cm	M002004948660
6 mm	80 cm	80 cm	M002004930860
7 mm	70 cm	70 cm	M002004930770
8 mm	30 cm	12 cm	M002004943180
8 mm	40 cm	20 cm	M002004944280
8 mm	40 cm	30 cm	M002004944380
8 mm	50 cm	20 cm	M002004945280
8 mm	70 cm	20 cm	M002004947280
8 mm	70 cm	30 cm	M002004947380
8 mm	70 cm	50 cm	M002004947580
8 mm	70 cm	70 cm	M002004930780
8 mm	80 cm	50 cm	M002004948580
8 mm	80 cm	70 cm	M002004948780
8 mm	80 cm	80 cm	M002004930880
10 mm	50 cm	50 cm	M002004930510
10 mm	70 cm	70 cm	M002004930710

Knitted Patches

HEMAGARD Patch



Material:

- Collagen-coated polyester patch
- Reverse locknit knitting technique
- Water permeability: < 5 ml/cm²/min*

Knitted

Dimensions (mm)	Code Number
25 mm x 50 mm	HGK25/50P (1)
25 mm x 75 mm	HGK25/75P (1)
25 mm x 150 mm	HGK25/150P (1)
25 mm x 100 mm	HGK25/100P (1)
50 mm x 50 mm	HGK50/50P (1)
50 mm x 75 mm	HGK50/75P (1)
50 mm x 150 mm	HGK50/150P (1)
75 mm x 75 mm	HGK75/75P (1)
100 mm x 100 mm	HGK100/100P (1)
10 mm x 140 mm	HGK10/140P (1)
20 mm x 140 mm	HGK20/140P (1)

*Data on file.

Knitted Patches

HEMAGARD Carotid Patch



Material:

- Collagen-coated polyester patch
- Reverse locknit knitting technique
- Water permeability: < 5 ml/cm²/min*

Knitted

Dimensions (mm)	Tapered	Code Number
6 mm x 75 mm	Yes	HGKTP06/75CP (1)
8 mm x 75 mm	Yes	HGKTP08/75CP (1)
10 mm x 75 mm	No	HGK10/75CP (1)
12 mm x 75 mm	No	HGK12/75CP (1)
14 mm x 75 mm	No	HGK14/75CP (1)

*Data on file.

Knitted Patches

HEMAGARD Carotid Patch Ultrathin



Material:

- Collagen-coated polyester patch
- Reverse locknit knitting technique
- Water permeability: < 5 ml/cm²/min*

Knitted Ultrathin

Dimensions (mm)	Tapered	Code Number
6 mm x 75 mm	Yes	HGKTP06/75CPUT (1)
8 mm x 75 mm	Yes	HGKTP08/75CPUT (1)
8 mm x 150 mm	Yes	HGKTP08/150CPUT (1)
10 mm x 75 mm	No	HGK10/75CPUT (1)
12 mm x 75 mm	No	HGK12/75CPUT (1)
14 mm x 75 mm	No	HGK14/75CPUT (1)
10 mm x 150 mm	No	HGK10/150CPUT (1)
25 mm x 100 mm	No	HGK25/100CPUT (1)
6 mm x 120 mm	Yes	HGKTP06/120CPUT (1)
8 mm x 120 mm	Yes	HGKTP08/120CPUT (1)
25 mm x 75 mm	No	HGK25/75CPUT (1)
25 mm x 150 mm	No	HGK25/150CPUT (1)

*Data on file.

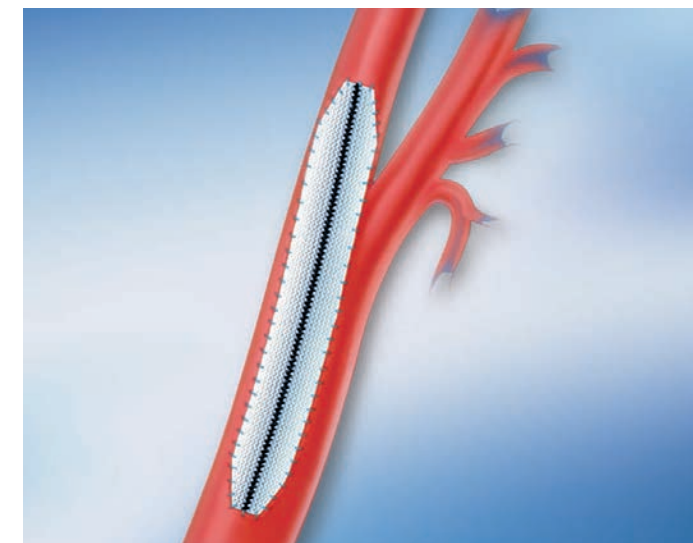
Knitted Patches

HEMASHIELD Platinum Finesse Patches



Material:

- Ultra-thin knitted impregnated polyester patch
- Water permeability: < 5 cc/min/cm²



Advancing material technology:

- Proprietary HEMASHIELD collagen impregnation process provides an initial blood-tight seal, excellent tissue ingrowth and biocompatibility
- Exclusive knitted, non-veloured material offers very good handling and strength
- Pre-trimmed, tapered end for greater procedural efficiency

HEMASHIELD Platinum Finesse

Width x Length (in)	Width x Length (cm)	Code Number
0.2 in x 3.0 in	0.6 cm x 7.6 cm	M00202019575P0
0.3 in x 3.0 in	0.8 cm x 7.6 cm	M00202019579P0
0.3 in x 6.0 in	0.8 cm x 15.2 cm	M00202019585P0
1.0 in x 3.0 in	2.5 cm x 7.6 cm	M00202019530P0*
1.0 in x 6.0 in	2.5 cm x 15.2 cm	M00202019561P0

Packaged 1 per box.

*Non-tapered ends.

Knitted Patches

HEMASHIELD Double Velour Fabrics



Material:

- Knitted / woven double velour impregnated polyester fabric
- Water permeability: < 10 cc/min/cm²

Excellent handling and strength:

- Proprietary HEMASHIELD collagen impregnation process provides an initial blood-tight seal, excellent tissue ingrowth and biocompatibility
- Exclusive double velour material offers very good handling and strength
- Choice of knitted or woven fabric construction provides an excellent match to the clinical demands of abdominal, peripheral and thoracic applications

HEMASHIELD Knitted Double Velour Fabrics

Width x Length (in)	Width x Length (cm)	Code Number
0.2 in x 3.0 in	0.6 cm x 7.6 cm	M002000195250*
0.2 in x 4.8 in	0.6 cm x 12.2 cm	M002000195280*
0.3 in x 3.0 in	0.8 cm x 7.6 cm	M002000195290*
0.3 in x 6.0 in	0.8 cm x 15.2 cm	M002000195100*
0.3 in x 3.0 in	0.8 cm x 7.6 cm	M002000195090
1.0 in x 3.0 in	2.5 cm x 7.6 cm	M002000195140
1.0 in x 6.0 in	2.5 cm x 15.2 cm	M002000195170
2.0 in x 3.0 in	5.1 cm x 7.6 cm	M002000195240
2.0 in x 6.0 in	5.1 cm x 15.2 cm	M002000195270

Packaged 1 per box.

*Tapered end.

Woven Patches

HEMASHIELD Double Velour Fabrics



Material:

- Woven double velour impregnated polyester fabric
- Water permeability: < 10 ml/cm²/min*

HEMASHIELD Woven Double Velour Fabrics

Width x Length (in)	Width x Length (cm)	Code Number
1.0 x 6.0 in	2.5 x 15.2 cm	M002000196170
2.0 x 3.0 in	5.1 x 7.6 cm	M002000196240
2.0 x 6.0 in	5.1 x 15.2 cm	M002000196270

*Data on file.

Woven Patches

HEMAPATCH Woven



Material:

- Collagen-coated polyester patch
- Water permeability: < 5ml/cm²/min*

Woven

Dimensions (mm)	Code Number
25 mm x 50 mm	HEW25/50P (1)
25 mm x 100 mm	HEW25/100P (1)
50 mm x 50 mm	HEW50/50P (1)
75 mm x 75 mm	HEW75/75P (1)
100 mm x 100 mm	HEW100/100P (1)

*Data on file.

Tunneling Solutions

Tunneler



Tunneler

Product	Description	Code Number
AV/PV combination Tunneler Set with tray	2 AV Tunnelers, 2 PV Tunnelers, Set of 8 Tips, 2 per size: 6 mm, 7 mm, 8 mm, 10 mm	26026
AV-1 Tunneler	26 cm Length with 50° curve (Stainless Steel)	26012
AV-2 Tunneler	27 cm Length with 180° curve (Stainless Steel)	26013
PV-1 Tunneler	33 cm Length with 12° curve (Stainless Steel)	26014
PV-2 Tunneler	58 cm Length with 24° curve (Stainless Steel)	26015
AV/PV combination Tunneler Case		26027

Tunneler Tips

Set of 8 Size Tips	2 per size: 6 mm, 7 mm, 8 mm, 10 mm	26006
4 mm Tips	Set of 2	26018
5 mm Tips	Set of 2	26019
6 mm Tips	Set of 2	26007
7 mm Tips	Set of 2	26008
8 mm Tips	Set of 2	26009
10 mm Tips	Set of 2	26010
Set of 8 Blunt Tips	2 per size: 6 mm, 7 mm, 8 mm, 10 mm	26020
6 mm Blunt Tips	Set of 2	26021
7 mm Blunt Tips	Set of 2	26022
8 mm Blunt Tips	Set of 2	26023
10 mm Blunt Tips	Set of 2	26024

Low Profiling Tunneling Instrumentation



Tunneling tips feature a large grasping area for easier manipulation.



Creates a tighter tunnel to match graft diameter.



Unique thumb tab provides directional control.

Slider GDS

The Slider GDS Tunneling System provides fast graft attachment and insertion. The Slider GDS System makes it easy to pull any small diameter graft through the subcutaneous tissue. The low profile tunneler tip with its thin protection sleeve minimizes trauma, allows for a tight graft tunnel, and minimizes pre-wetting of the graft.¹

The Slider GDS has a double sheath system designed to minimize the risk of contaminating the graft material prior to insertion.

Protected by the following international and U.S. Patent(s): <http://patents.getinge.com>

1. Schild AF, Baltodano NM, Alfieri K, Livingstone J, Raines JK. New Graft for Low Friction Tunneling in Vascular Access Surgery. J Vasc Access. 2004 Jan-Mar;5(1):19-24.

Tunneling Solutions

Vein Graft Tunneling System



Vein Graft Tunneling System (VGTS):

- Quick attachment of a prepared harvested vein is made by the preattached slipknot suture
- The protective outer sheath reduces trauma and stress on vein and surrounding tissue
- The VGTS attaches easily to Getinge's tunneler for quick implantation
- Creates a tighter, smaller tunnel compared to that of conventional sheath style tunnelers

Vein Graft Tunneling System

Code Number

26050

Other Products

Polyester Tape



Material:

- Braided polyester fabric

Effective retraction:

- Strong, tight braided polyester fabric designed to reduce risk of tissue trauma while providing effective retraction

Sterile

Width x Length (in)	Width x Length (cm)	Code Number
1/8 x 18.0 in	0.32 x 45.7 cm	M002000194310
1/8 x 24.0 in	0.32 x 61.0 cm	M002000194320
1/8 x 30.0 in	0.32 x 76.2 cm	M002000194330
3/16 x 18.0 in	0.48 x 45.7 cm	M002000194410
3/16 x 24.0 in	0.48 x 61.0 cm	M002000194420
3/16 x 30.0 in	0.48 x 76.2 cm	M002000194430
1/4 x 18.0 in	0.64 x 45.7 cm	M002000194510
1/4 x 24.0 in	0.64 x 61.0 cm	M002000194520
1/4 x 30.0 in	0.64 x 76.2 cm	M002000194530

Packaged 2 strips per package. Packaged 5 per box.

Other Products

Graft Sizers



Single use plastic sizers for graft measurement prior to graft implantation.

Small Graft Sizer

Diameter (mm)	Multipack	Code Number
5-24 mm	10 units per pack	M002363200201

Large Graft Sizer

Diameter (mm)	Multipack	Code Number
24-38 mm	10 units per pack	M002363200211

Knowing What's Important

The Academy



As a communication center, the Getinge Academy offers a variety of special events on topics relating to medicine, health policy, and hospital management. The exhibition hall features Getinge's complete product range, two auditoria with multimedia equipment, four conference rooms, and fully equipped and functional operating and intensive care rooms.

In workshops, experts in small groups communicate valuable findings for everyday clinical work. One of many practice-oriented teaching materials include a positioning primer, which explains the rudiments of surgical positioning step-by-step.

Inhouse product trainings for worldwide Getinge business partners ensure a continuing high level of knowledge and the ability for excellent customer support.

GETINGE GROUP

Getinge Group
45 Barbour Pond Drive
Wayne, NJ 07470

www.getingegroup.com

MAQUET
GETINGE GROUP

ARJOHUNTLEIGH
GETINGE GROUP

GETINGE
GETINGE GROUP

Getinge Group is a leading global provider of innovative solutions for operating rooms, intensive-care units, hospital wards, sterilization departments, elderly care and for life science companies and institutions. With a genuine passion for life we build quality and safety into every system. Our unique value proposition mirrors the continuum of care, enhancing efficiency throughout the clinical pathway. Based on our first-hand experience and close partnerships, we are able to exceed expectations from customers – improving the every-day life for people, today and tomorrow.

MCV00030586 REVB